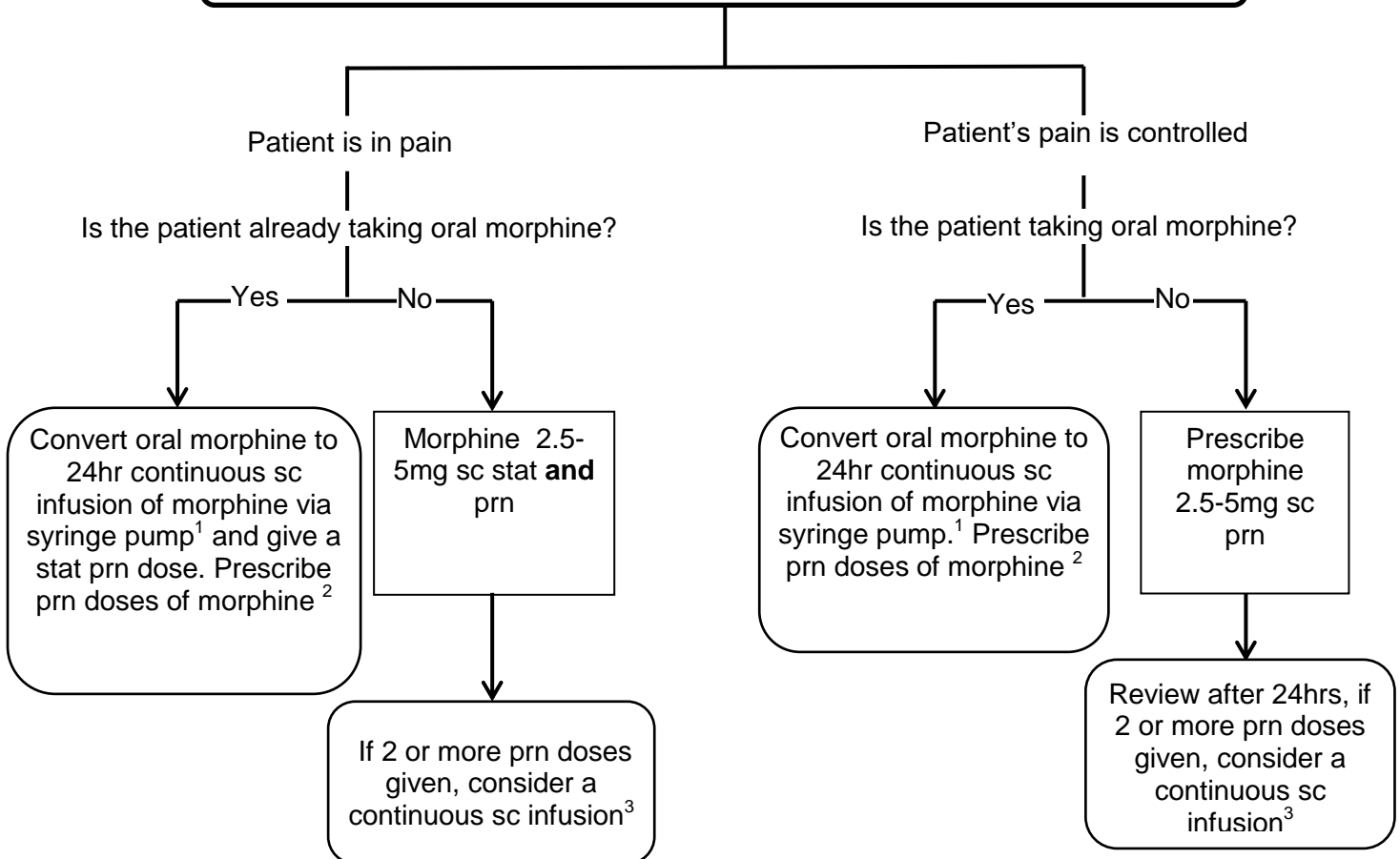


## Pain in the last days of life



1. To convert oral morphine to 24hr continuous sc infusion of morphine, divide total 24hr oral dose of morphine by 2.  
e.g. morphine 60mg PO/24hrs = morphine 30mg sc/24hrs
2. Prn morphine dose = one sixth of 24hr continuous sc infusion dose.
3. To convert prn morphine dose to a 24hr continuous sc infusion, be guided by total dose given in the last 24hrs and round up to a convenient amount. NB Check that opioid prn's have been given for pain and not for agitation or restlessness, in which case a lower opioid dose may be used with addition of an appropriate drug for management of this symptom (see restlessness and agitation flow chart).
4. To convert to or from other strong opioids, refer to Chapter 16 South and West Devon Formulary guidelines or seek specialist advice.